



Executive Board Informal Regional Briefing



- ❖ Asia and the Pacific
- ❖ Europe and Central Asia
- ❖ Africa
- ❖ Latin America and the Caribbean



21 JUNE 2019

Asia and the Pacific:

Advancing gender equality in the context of the UNDS Reform

Mohammad Naciri
Regional Director, Asia and the Pacific

Impact story: Basanti Tamang, a Returned Migrant in Nepal Finds a New Start



Overview of GEWE in the Context of UN Reforms



Agenda 2030

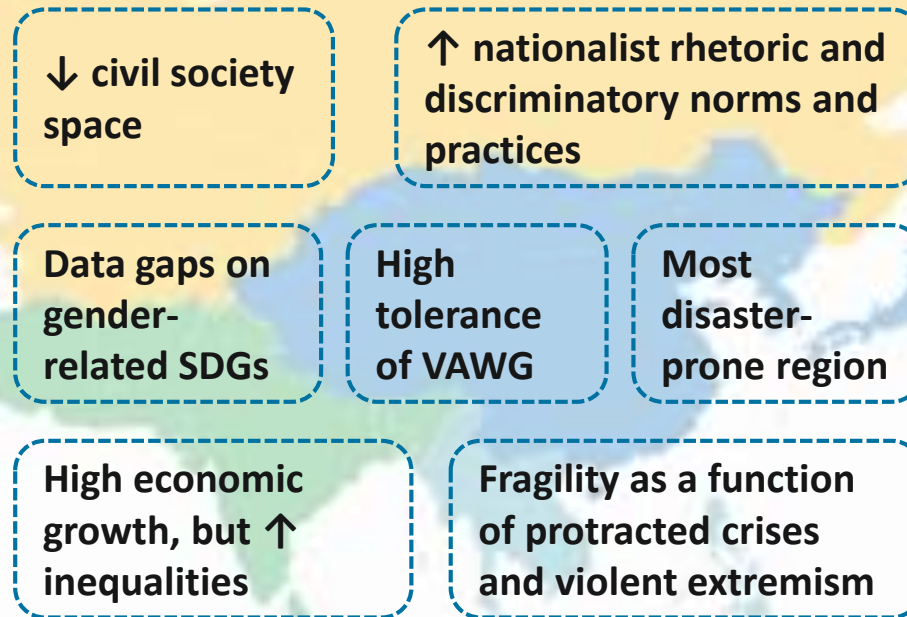
- **“Fundamental importance”** of GEWE
- **All forms of discrimination against women and girls will be eliminated (LNOB)**
- Transformative standalone goal and systematic mainstreaming of gender-**“crucial”**
- **SDGs: Integrated, universal, indivisible**

QCPR & SG’s Reports

- UN system to **promote women’s empowerment and gender equality**, through **full implementation of SWAP**
- Investment in gender equality and women’s empowerment- **far too low**

UN System-wide response

UNSDCF (GEWE programming principle); LNOB guidance; System-wide Gender Parity Strategy; UNCT-SWAP Gender Scorecard 2.0; UNINFO GEM



Safe and Fair: Realizing Women Migrant Workers’ Rights and Opportunities

- UN Women’s partners: ILO, UNODC (Funded by the EU)
- Coverage: ASEAN
- Focus: VAWG, WEE, Normative/inter-governmental support



Showcasing Our Triple Mandate in Action



Markets for Change (Fiji, Solomon Islands, Vanuatu)

- Strategic partners: Australia and Canada (Implemented in partnership with UNDP)
- Thematic focus: Governance and leadership; Economic Empowerment



Preventing Violent Extremism (South and South East Asia)

- Strategic Partner: Japan
- Thematic focus: Economic Empowerment, Women, Peace and Security



Making Every Woman and Girl Count (Asia and the Pacific)

- UN Women's partners: SIAP (Strategic partners: DFAT/Australian Government)
- Thematic focus: Gender Statistics

Inter-governmental and normative support

- Engage RCM and regional bodies to advance normative frameworks (ESCAP, ASEAN, Pacific Islands Forum (BPfA review / CSW / SDGs)
- Support to Member States in operationalization, reporting and tracking of commitments (BPfA/CEDAW/SDGs/UPR)
- Facilitate Civil Society engagement mechanism (Beijing+25 Civil Society Steering Committee)
- Produce regional analyses (Baseline report on SDGs, regional synthesis report on Beijing+25 review)

Partnering in the Context of UN Reform



Climate change & DRR: EmPower- Women for Climate Resilient Societies

- (Bangladesh, Cambodia, Viet Nam)
- UN Women's partners: UN Environment (Strategic Partner: SIDA)



- ## Governance: Access to Justice
- (Nepal, Philippines, Pacific Island countries, Indonesia, Timor-Leste, Sri Lanka)
- UN Women's partners: OHCHR, ICJ (Strategic Partner Sweden)



EVAW: Pacific Partnerships to EVAWG (Pacific)

- UN Women's partners: Pacific Community, PIFS (Strategic Partners: EU, Australia)



- ## Programming across the Humanitarian/Development nexus in Rakhine State
- (Myanmar)
- UN Women's partners: IOM, UNDP, UNFPA, UNHCR, UNICEF and WFP (Strategic Partner Japan)



Future Work - Priorities for 2019-2021



Inter-governmental and normative support

Support Member States and stakeholders in operationalizing normative frameworks

Increase voice of women's movement – and influence inter-governmental processes

Lead on new/innovative partnerships for SDG implementation



UN Coordination

Integrated policy advisory and technical support to UNCTs

Lead on GEWE in quality support on UNSDCF development

Capacity development on programming principles (GEWE) and gender-responsive RBM

Facilitate engagement of RCM/regional bodies



Research and data

Methodologies and tools for gender statistics

Technical expertise and advice for policy development

Capacity building for national policymakers

Cutting edge knowledge and evidence in new sectors (e.g. trade, infrastructure, energy)



Programming 2.0

Lead innovative, integrated, transformative programming

Drive programming across humanitarian / peace / development nexus

Women's leadership as an enabler for change

Sustainability: National ownership and stakeholder capacities- a must

Shared valued public-partner partnerships

Results to Scale



Knowledge hub: Build **evidence base** and **methodologies** in existing and emerging areas – focused on cementing UN Women’s thought leadership on GEWE

Capacity development and technical assistance: Focus on governments, traditional and non-traditional partners to operationalize GEWE normative frameworks

Convener role: Facilitate diverse civil society ‘voice’ and influence in normative spaces and programming

One UN: Lead on integrated policy advice, capacity development and enhancement of accountability on GEWE

Programmatic interventions: Pilot innovative high impact programmes (JPs) in non-traditional areas



Thank you