



RESPONSES TO COVID-19: REGIONAL & COUNTRY LEVELS

Mohammad Naciri, Regional Director

UN Women Regional Office for Asia and the Pacific

20 April 2020



COVID-19
RESPONSE

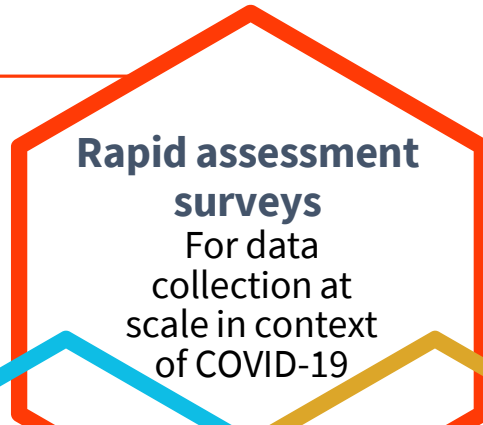
UN
WOMEN

DATA AND KNOWLEDGE GENERATION

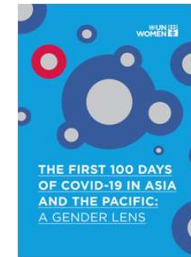
MAKING VISIBLE THE GENDERED IMPACTS OF THE PANDEMIC



In **Asia-Pacific**, data collection on the consequences of COVID-19 on women's and men's livelihoods is conducted through nationally-representative rapid assessment surveys



Consolidating evidence to inform policy



In **Barbados**, joint socio-economic assessment by UN Women, UNICEF and UNDP



In **ECA**, a knowledge hub provides technical & rapid support to offices



COVID-19 RESPONSE



COORDINATION AND PARTNERSHIPS

CATALYZING SYSTEM-WIDE GENDER COMMITMENTS AND RESPONSE

SUPPORTING GOVERNMENT COUNTERPARTS

LACRO & ECLAC: Map gender-sensitive responses of LAC countries

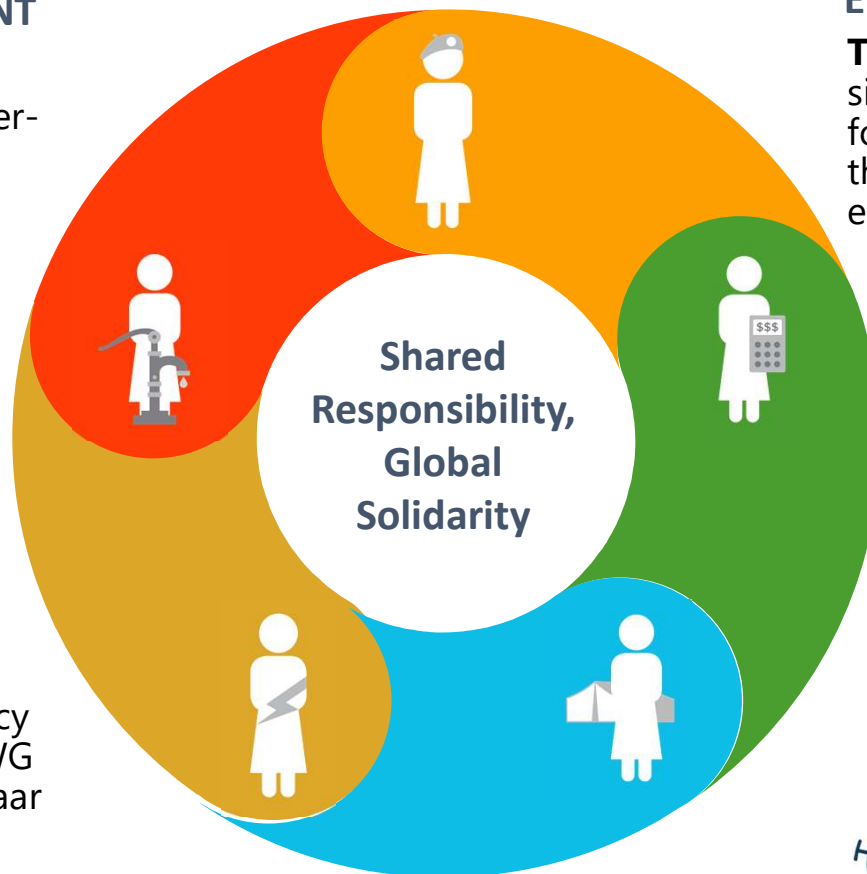
Ethiopia/ESA-RO & AU: Develop policy brief on GEWE x COVID-19

UN COORDINATION ROAS/UNICEF/ UNFPA:

Established a Regional Working Group on VAW & COVID-19

HUMANITARIAN COORDINATION

Bangladesh: Leading advocacy and technical work of GiHA WG and Gender Hub in Cox's Bazaar for inter-sector humanitarian coordination system



ENGAGING THE PRIVATE SECTOR

Turkey: Letters sent to 300+ WEPs signatories & 13 Unstereotype Alliance founding member companies to join the COVID-19 response and support efforts against GBV

ROAP, EU, Makati Business Club: Hosted online forum attended by 100+ participants (including from multi-national companies), recommitting to put WEE and resilience in the forefront

MOBILIZING CIVIL SOCIETY

Palestine: Platform that includes 30+ women organizations created to amplify the voices of women's organizations in humanitarian processes

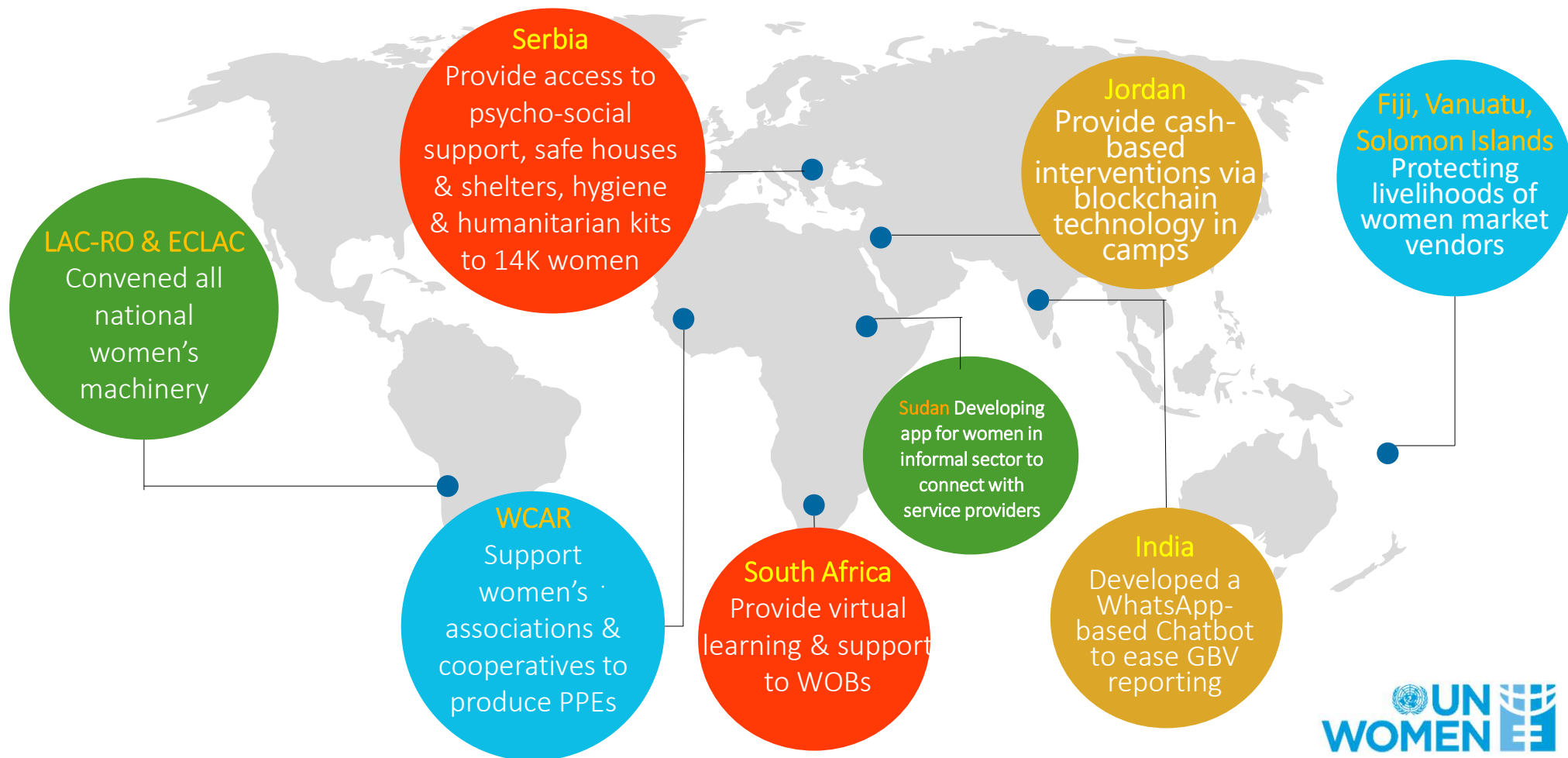


COVID-19
RESPONSE



ADAPTING PROGRAMMES FOR THE COVID-19 CONTEXT

MEETING IMMEDIATE NEEDS, SAFEGUARDING DEVELOPMENT GAINS, LAYING FOUNDATIONS FOR JUST RECOVERY



LESSONS LEARNED FOR THE MTR & DEVELOPMENT OF NEXT SP

UN Women's engagement in IASC is critical, and expansion for the humanitarian programme

Investing in 'coordination' capacities is key to effectively leveraging UN-system efforts



Increased focus on data & knowledge generation for critical and multiplier effects

Focus on economic policies and social protection will be central to WEE programme

Flexible funding is critical to meeting immediate needs of women and girls



COVID-19
RESPONSE

UN
WOMEN



Thank you!



COVID-19
RESPONSE

