

Evidence and lessons on types of UN Women support

Meta-synthesis of UN Women Evaluations

DECEMBER 2021



Purpose

→ Collate **INSIGHTS AND EVIDENCE** on key types of support provided by UN Women during the Strategic Plan period (2018-2021)

→ Analysis focuses on key insights, good practices and impediments in **FOUR BROAD AREAS:**



1



Normative support

2



Integrated policy advice and thought leadership

3



Capacity development and technical assistance

4



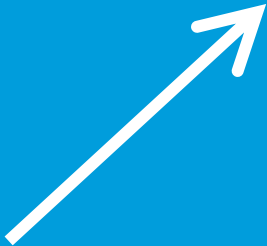
Advocacy and social mobilization

Scope and approach

67

67 evaluations

- All IES-led corporate, regional & country portfolio evaluations (2018–2020)
- 2 global evaluations from 2018
- All 2019/20 decentralized evaluations

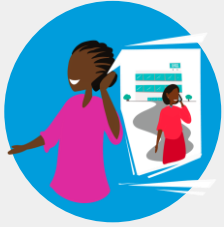


Forward-looking approach

Analysis includes a forward-looking aspect and makes **linkages with key approaches** in the new Strategic Plan (2022-2025)

Geographic Coverage of Evaluation Sample





NORMATIVE SUPPORT

Good practices

- Fostering long term alliances and mutually beneficial country-level partnerships
- Alignment with national and international priorities
- Fostering national ownership and national champions in order to ensure sustainability

Impediments

- Need for long-term engagement with multiple layers of government
- Insufficient support to implementation of normative frameworks

KEY INSIGHTS

- UN Women worked to strengthen national and legal frameworks, contributed to the creation of laws and policies to protect women's rights, and supported mechanisms for gender mainstreaming.

- Key to these efforts was ensuring and enhancing the inclusion of women's organizations in intergovernmental negotiations; supporting governments to establish gender units; and providing gender focal points for governments.

- UN Women worked with national and local ministries in several countries to push for gender-responsive budgets, and gender-responsive policymaking and planning through a combination of technical assistance and advocacy.



POLICY ADVICE

Good practices

- Alignment with the local context and good timing
- Production of highly relevant research to facilitate conversations and advocacy around policy issues

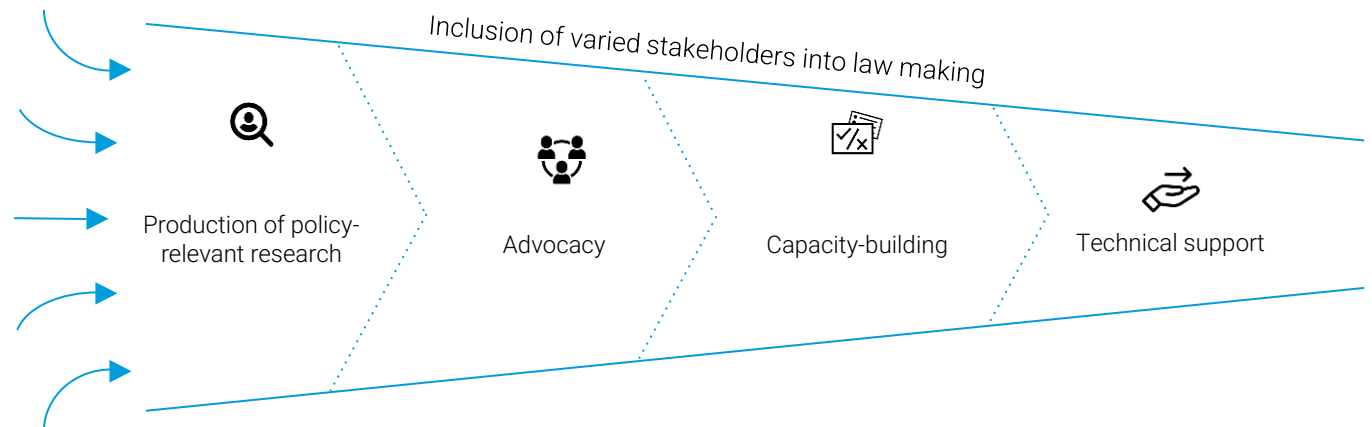
Impediments

- Inadequate implementation support to the path from enactment to implementation of laws

KEY INSIGHTS

→ UN Women provided a range of technical support, advocacy and capacity building while working with civil society organizations (CSOs) and governments to ensure the inclusion of varied stakeholders into law making.

→ UN- Women supported policy advice through the production of policy-relevant research.





CAPACITY DEVELOPMENT

and technical assistance

Good practices

- Building institutional capacity and strengthening existing mechanisms
- Provision of comprehensive support packages and holistic approaches
- Baseline surveys and participatory needs assessments to ensure inclusion of marginalized groups

Impediments

- Short-term nature of interventions
- Lack of results tracking and post training follow-up

KEY INSIGHTS

- UN Women supported capacity development of national institutions and CSOs in a wide range of areas such as results-based management, monitoring and evaluation, gender statistics, gender-responsive governance and gender-responsive laws and policies.

- UN Women adapted efforts based on local needs by tailoring activities and facilitating inter-governmental exchanges through international forums and convening.

- UN Women provided support through training in all four key thematic areas.



ADVOCACY AND SOCIAL MOBILIZATION

Good practices

- Engaging influential partners as champions, building and mobilizing alliances
- Establishing political dialogue with key actors to whom NGOs or CSOs may not have access
- Being active advocates and mobilizing public and private actors and through communication efforts

Impediments

- Limited reach and duration of campaigns in terms of reaching the most marginalized/ vulnerable
- Need for improvement in tracking results/changes in outcomes post advocacy

KEY INSIGHTS

- UN Women's awareness raising campaigns were successful in engaging women, and in some instances, campaigns provided a platform for communities to engage in discussions around social norms.
- UN Women also supported building alliances across different areas of work.



Opportunities and the way forward

1

Complement normative support with enhanced **SUPPORT TO IMPLEMENTATION** of norms and standards to protect women's rights

2

Enhance **MEASUREMENT OF IMPACT AND RESULTS TRACKING** beyond inputs and outputs, particularly in areas of large investment and effort

3

Focus on key **STRATEGIC AREAS** and work with partners to **PROVIDE LONG TERM SUPPORT** and build-in sustainability measures

4

Develop **HOLISTIC APPROACHES** with multi-level engagements involving a combination of advocacy, capacity building, training, and normative support

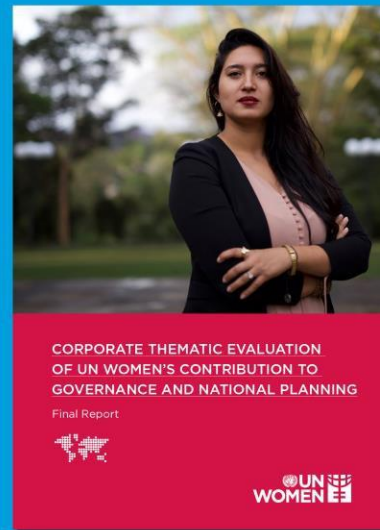
5

Enhance the use of **GENDER DATA**, research and standardized **NEEDS ASSESSMENTS**

THANK YOU

Find all corporate evaluations at:

<http://www.unwomen.org/en/about-us/accountability/evaluation/corporate-evaluations>



Find us on Twitter



@unwomenEval