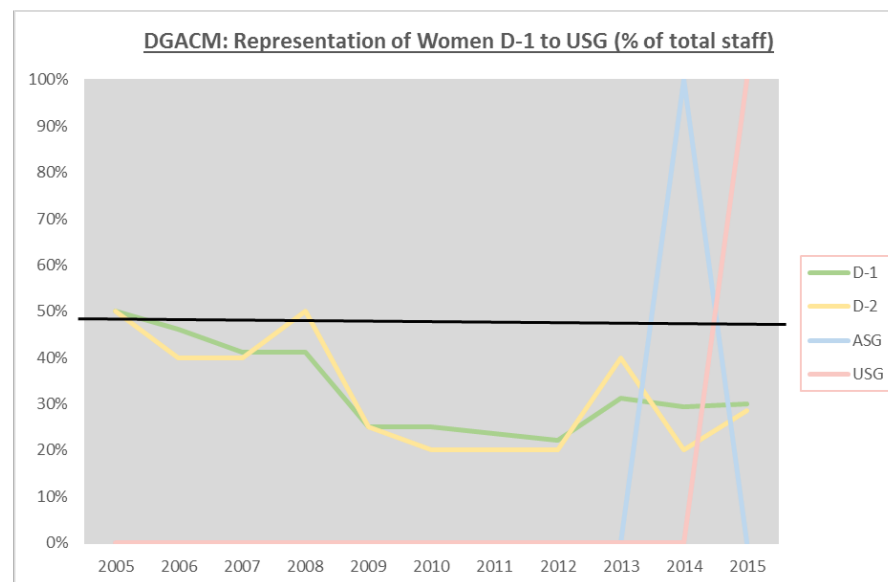
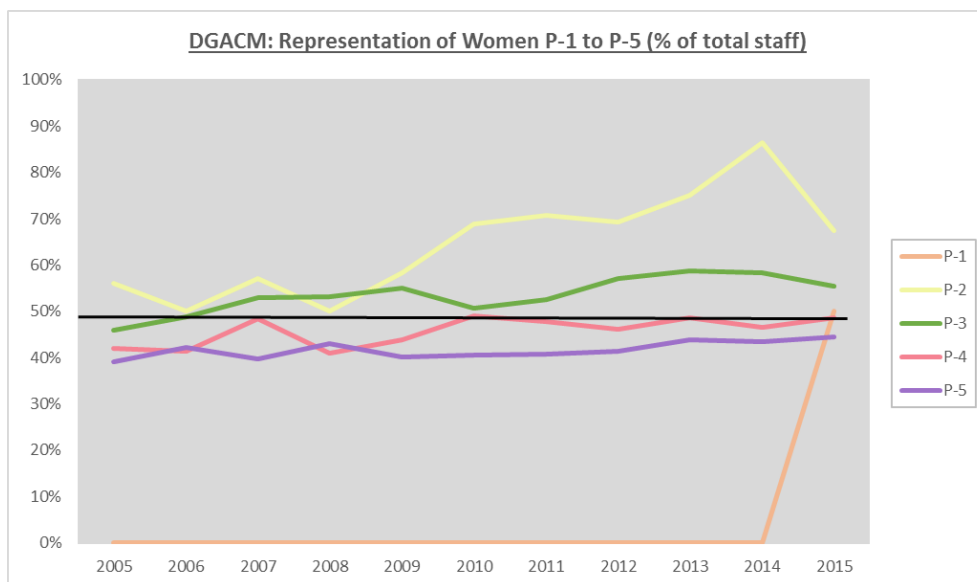


### DGACM: Representation of Women (P-1 to UG) 2005 to 2015, on contracts of a year or more, at all locations



YEAR	P-1			P-2			P-3			P-4			P-5			D-1			D-2			ASG			USG			TOTAL			
	M	F	% F	M	F	% F	M	F	% F	M	F	% F	M	F	% F	M	F	% F	M	F	% F	M	F	% F	M	F	% F	M	F	TOTAL	% F
2005	0	0	0%	11	14	56%	105	89	46%	116	84	42%	61	39	39%	7	7	50%	2	2	50%	0	0	0%	1	0	0%	303	235	538	44%
2006	0	0	0%	16	16	50%	91	87	49%	119	84	41%	59	43	42%	7	6	46%	3	2	40%	1	0	0%	1	0	0%	297	238	535	44%
2007	0	0	0%	12	16	57%	66	74	53%	46	43	48%	41	27	40%	10	7	41%	3	2	40%	1	0	0%	1	0	0%	180	169	349	48%
2008	0	0	0%	10	10	50%	79	90	53%	117	81	41%	65	49	43%	10	7	41%	3	3	50%	0	0	0%	1	0	0%	285	240	525	46%
2009	0	0	0%	15	21	58%	82	100	55%	114	89	44%	64	43	40%	12	4	25%	3	1	25%	1	0	0%	1	0	0%	292	258	550	47%
2010	0	0	0%	14	31	69%	85	87	51%	103	99	49%	69	47	41%	12	4	25%	4	1	20%	1	0	0%	1	0	0%	289	269	558	48%
2011	0	0	0%	12	29	71%	84	93	53%	105	96	48%	67	46	41%	13	4	24%	4	1	20%	1	0	0%	1	0	0%	287	269	556	48%
2012	0	0	0%	8	18	69%	79	105	57%	110	94	46%	68	48	41%	14	4	22%	4	1	20%	1	0	0%	0	0	0%	284	270	554	49%
2013	0	0	0%	4	12	75%	80	114	59%	105	99	49%	63	49	44%	11	5	31%	3	2	40%	1	0	0%	1	0	0%	268	281	549	51%
2014	0	0	0%	3	19	86%	78	109	58%	108	94	47%	65	50	43%	12	5	29%	4	1	20%	0	1	100%	1	0	0%	271	279	550	51%
2015	1	1	50%	16	33	67%	138	171	55%	192	181	49%	110	88	44%	14	6	30%	5	2	29%	0	0	0%	0	1	100%	476	483	959	50%

Source: CEB HR Report (2005-2014), OHRM (2015). Prepared by the Focal Point for Women, UN System Coordination Division.