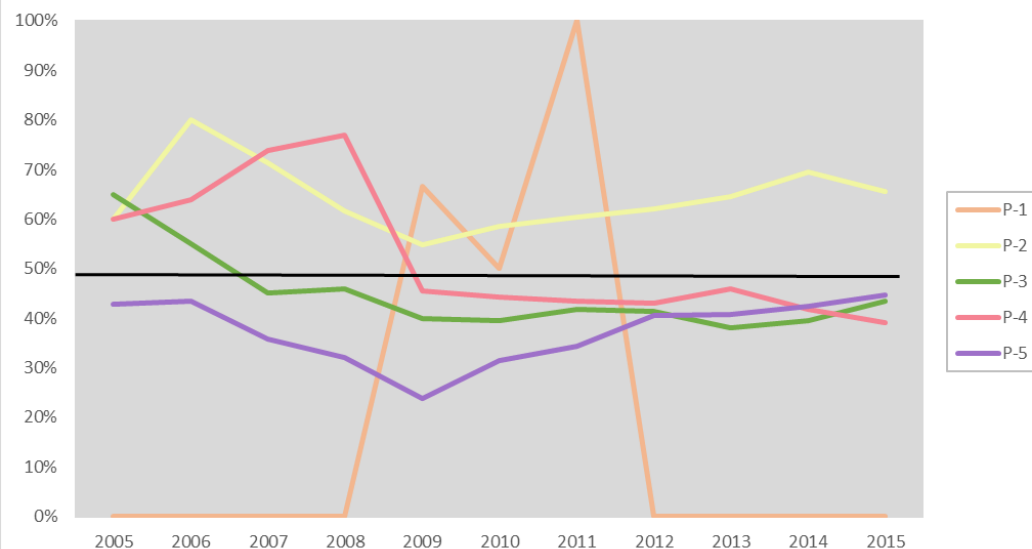
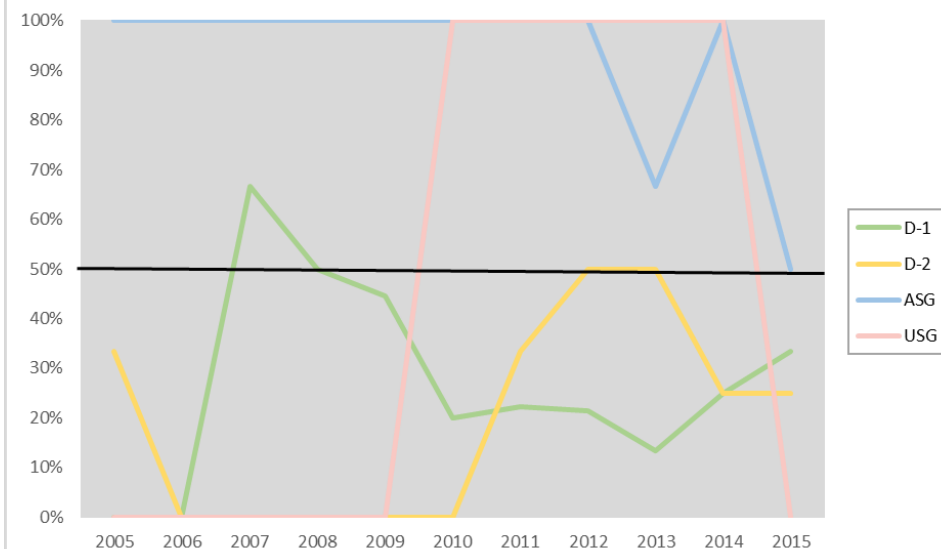


OCHA: Representation of Women (P-1 to UG) 2005 to 2015, on contracts of a year or more, at all locations

OCHA: Representation of Women P-1 to P-5 (% of total staff)



OCHA: Representation of Women D-1 to USG (% of total staff)



YEAR	P-1			P-2			P-3			P-4			P-5			D-1			D-2			ASG			USG			TOTAL					
	M	F	% F	M	F	% F	M	F	% F	M	F	% F	M	F	% F	M	F	% F	M	F	% F	M	F	% F	M	F	% F	M	F	% F	M	F	TOTAL
2005	0	0	0%	2	3	60%	7	13	65%	10	15	60%	12	9	43%	6	0	0%	2	1	33%	0	1	100%	1	0	0%	40	42	82	51%		
2006	0	0	0%	1	4	80%	9	11	55%	13	23	64%	13	10	43%	4	0	0%	5	0	0%	0	1	100%	0	0	0%	45	49	94	52%		
2007	0	0	0%	2	5	71%	17	14	45%	12	34	74%	18	10	36%	1	2	67%	4	0	0%	0	1	100%	1	0	0%	55	66	121	55%		
2008	0	0	0%	5	8	62%	20	17	46%	12	40	77%	17	8	32%	3	3	50%	4	0	0%	0	1	100%	1	0	0%	62	77	139	55%		
2009	1	2	67%	37	45	55%	151	100	40%	97	81	46%	51	16	24%	5	4	44%	3	0	0%	0	2	100%	1	0	0%	346	250	596	42%		
2010	1	1	50%	24	34	59%	141	92	39%	98	78	44%	46	21	31%	8	2	20%	2	0	0%	0	2	100%	0	1	100%	320	231	551	42%		
2011	0	1	100%	17	26	60%	135	97	42%	100	77	44%	44	23	34%	7	2	22%	2	1	33%	0	2	100%	0	1	100%	305	230	535	43%		
2012	0	0	0%	11	18	62%	179	126	41%	118	89	43%	44	30	41%	11	3	21%	2	2	50%	0	2	100%	0	1	100%	365	271	636	43%		
2013	0	0	0%	11	20	65%	204	125	38%	125	106	46%	51	35	41%	13	2	13%	2	2	50%	1	2	67%	0	1	100%	407	293	700	42%		
2014	0	0	0%	11	25	69%	197	129	40%	137	98	42%	53	39	42%	12	4	25%	3	1	25%	0	2	100%	0	1	100%	413	299	712	42%		
2015	0	0	0%	10	19	66%	171	131	43%	146	94	39%	47	38	45%	12	6	33%	3	1	25%	1	1	50%	1	0	0%	391	290	681	43%		

Source: CEB HR Report (2005-2014), OHRM (2015). Prepared by the Focal Point for Women, UN System Coordination Division.