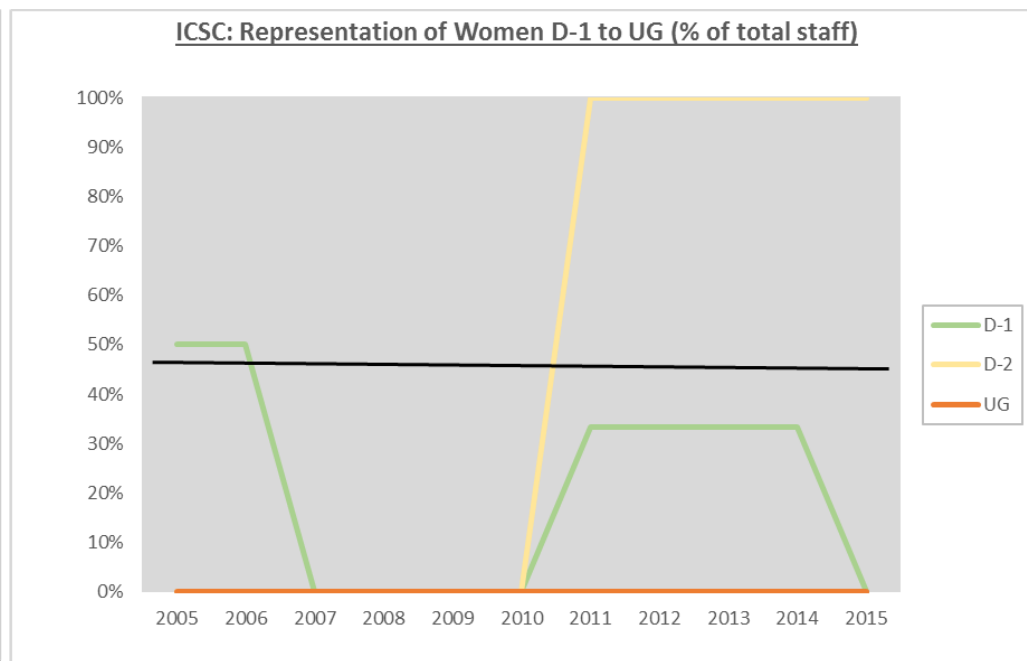
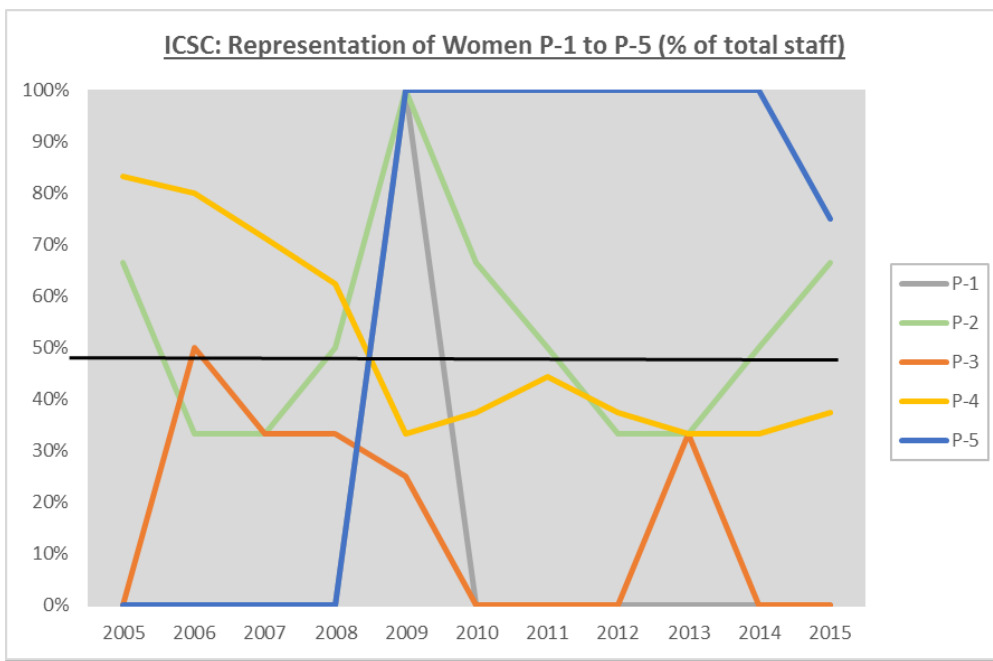


**ICSC: Representation of Women (P-1 to UG) 2005 to 2015, on contracts of a year or more, at all locations**



YEAR	P-1			P-2			P-3			P-4			P-5			D-1			D-2			UG			TOTAL			
	M	F	% F	M	F	% F	M	F	% F	M	F	% F	M	F	% F	M	F	% F	M	F	% F	M	F	% F	M	F	TOTAL	% F
2005	0	0	0%	1	2	67%	2	0	0%	1	5	83%	2	0	0%	1	1	50%	0	0	0%	0	0	0%	7	8	15	53%
2006	0	0	0%	2	1	33%	2	2	50%	1	4	80%	2	0	0%	1	1	50%	1	0	0%	0	0	0%	9	8	17	47%
2007	0	0	0%	2	1	33%	2	1	33%	2	5	71%	1	0	0%	3	0	0%	1	0	0%	2	0	0%	13	7	20	35%
2008	0	0	0%	1	1	50%	2	1	33%	3	5	63%	0	0	0%	4	0	0%	1	0	0%	0	0	0%	11	7	18	39%
2009	0	1	100%	0	1	100%	3	1	25%	4	2	33%	0	3	100%	3	0	0%	1	0	0%	2	0	0%	13	8	21	38%
2010	0	0	0%	1	2	67%	3	0	0%	5	3	38%	0	3	100%	3	0	0%	1	0	0%	2	0	0%	15	8	23	35%
2011	0	0	0%	1	1	50%	3	0	0%	5	4	44%	0	3	100%	2	1	33%	0	1	100%	0	0	0%	11	10	21	48%
2012	0	0	0%	2	1	33%	2	0	0%	5	3	38%	0	4	100%	2	1	33%	0	1	100%	0	0	0%	11	10	21	48%
2013	0	0	0%	2	1	33%	2	1	33%	6	3	33%	0	4	100%	2	1	33%	0	1	100%	0	0	0%	12	11	23	48%
2014	0	0	0%	2	2	50%	2	0	0%	6	3	33%	0	4	100%	2	1	33%	0	1	100%	0	0	0%	12	11	23	48%
2015	0	0	0%	1	2	67%	3	0	0%	5	3	38%	1	3	75%	2	0	0%	0	1	100%	0	0	0%	12	9	21	43%

Source: CEB HR Report (2005-2014), UN Entities (2015). Prepared by the Focal Point for Women, UN System Coordination Division.